

Metres

1000

0

100

Metres

521000 E

520500 E

520000 E

519500 E

519000 E

418500 N

518500 E

418000 N

418000 N

417500 N

417500 N

521000 E

520500 E

520000 E

519500 E

519000 E

417000 N

417000 N

RIVER HUMBER CLAY HUTS DEPOSIT AREA

DEPTHS IN METRES
SCALE 1 : 2500
SURVEYED BY

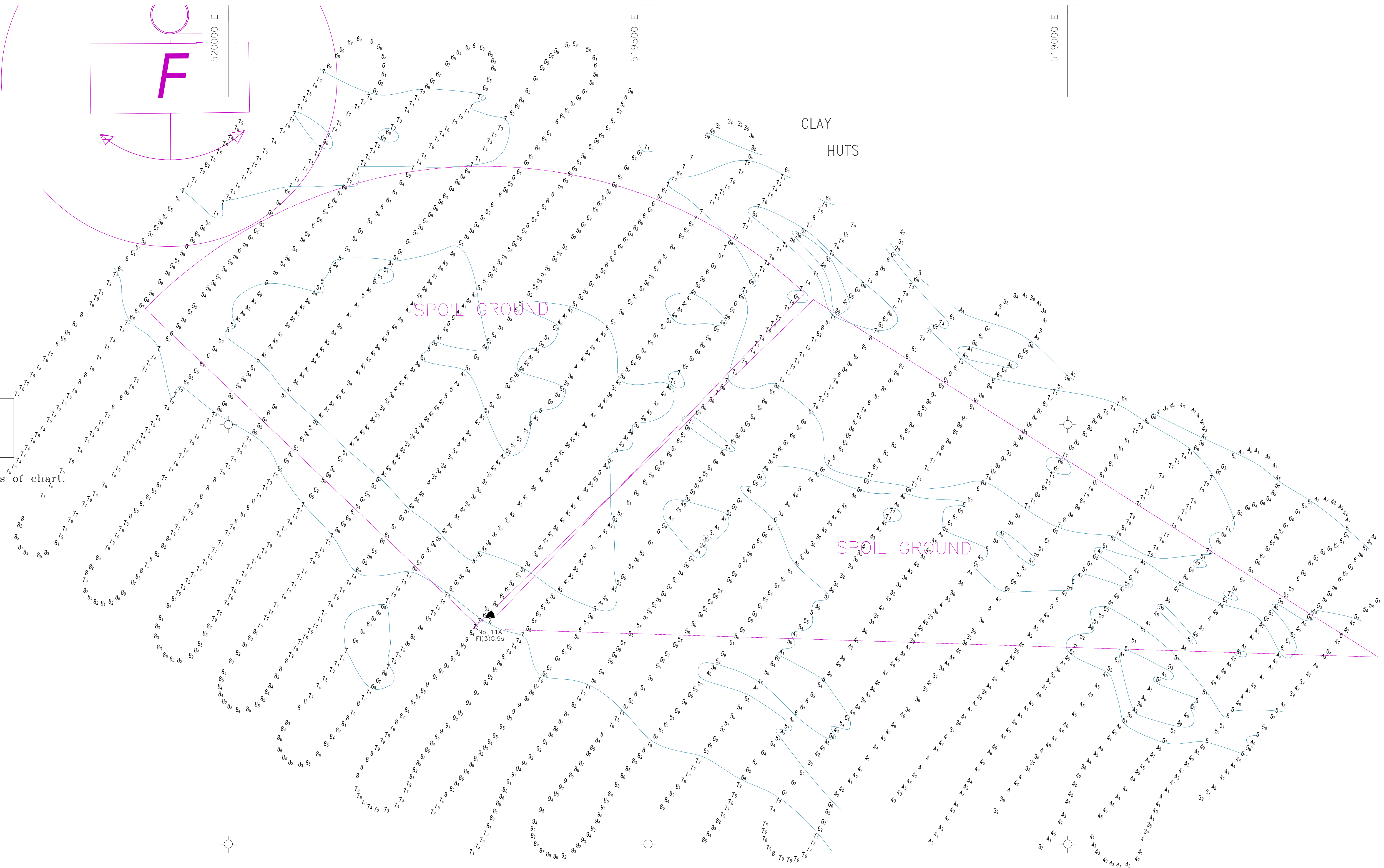
Harbour Master, Humber
ASSOCIATED BRITISH PORTS
22nd November 2016

Depths are in metres and decimetres reduced to the chart datum given below
Underlined figures are drying heights in metres and decimetres above chart datum

PLACE	TIDAL LEVEL AND CHART DATUM				Chart Datum and remarks	
	Heights in metres above Chart Datum	M.H.W.S.	M.H.W.N.	M.L.W.N.		M.L.W.S.
IMMINCHAM			5.8	2.6	0.9	3.9m below O.D. Newlyn Being approx. L.A.T.

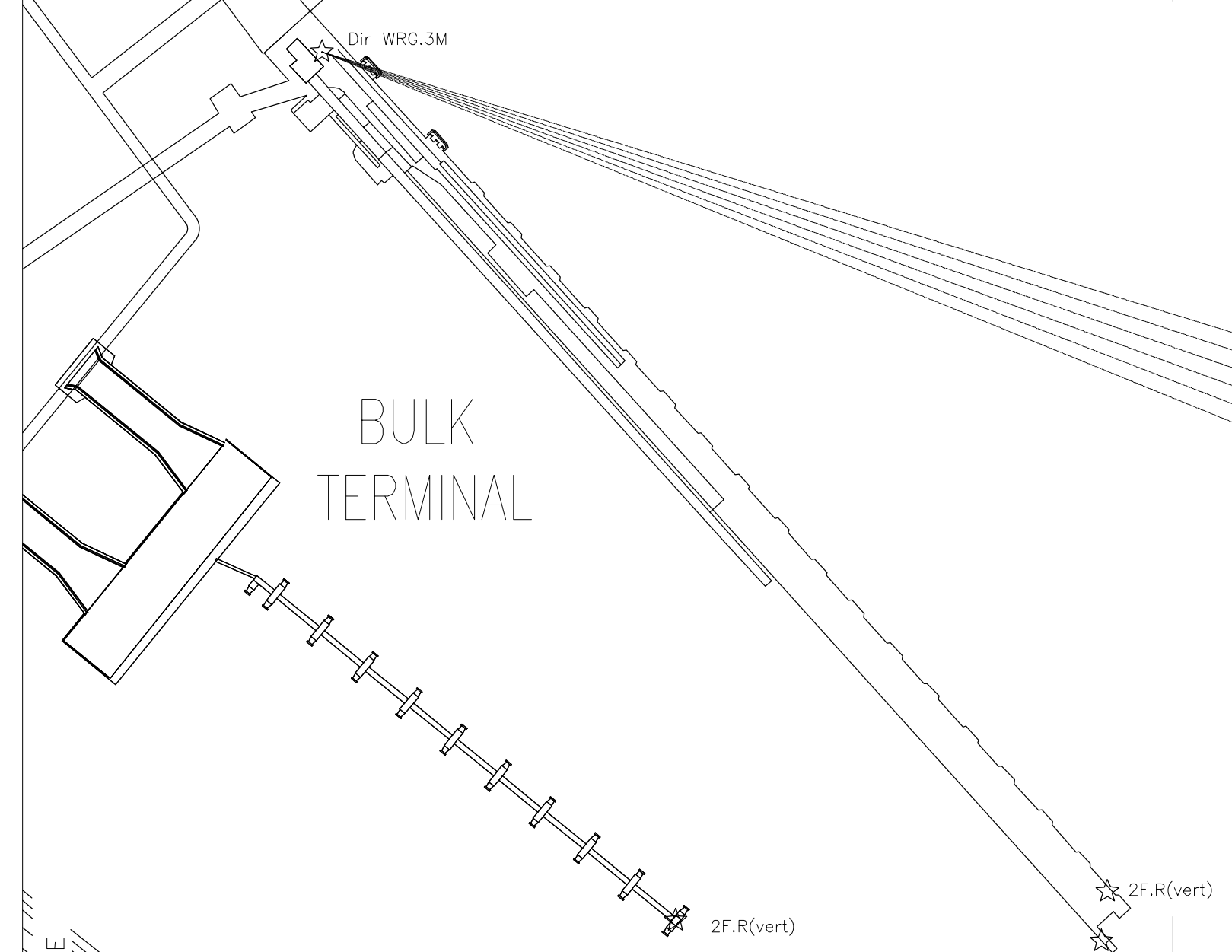
Projection :- Transverse Mercator. National Grid references are given along borders of chart.

Whilst every care was taken in the preparation of this Chart, which is intended to provide Mariners with the data which Associated British Ports possessed at the time of its preparation, ABP gives notice that thereafter, on account of the quickly shifting character of the river bed, no warranty is afforded that such data can be relied upon and, further, no responsibility can be accepted by ABP for any inaccuracy in the Chart or omission therefrom



H.I.T. TERMINAL

BULK TERMINAL



F.G
Iso.C.1s
F.W.
Iso.R.1s
F.R

7.3